

# Variational Methods & Optimal Control

## lecture 19

Matthew Roughan

<matthew.roughan@adelaide.edu.au>

Discipline of Applied Mathematics  
School of Mathematical Sciences  
University of Adelaide

April 14, 2016

Variational Methods & Optimal Control: lecture 19 – p.1/18

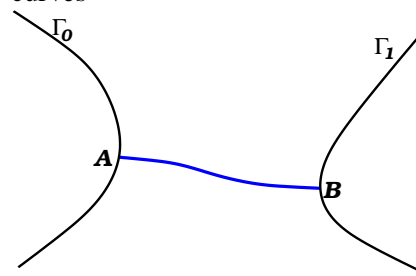
# Transversals

When we consider an extremal joining a curve to a point (or two curves) then we often call the extremal a transversal. The free-end-point condition simplifies in many such cases, for instance, in many situations we look for a transversal that joins the proscribed curve at right angles.

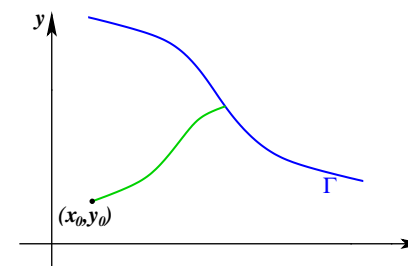
Variational Methods & Optimal Control: lecture 19 – p.2/18

# Transversal examples

Find the shortest path between two curves



Find the shortest path from a point  $(x_0, y_0)$  to a curve  $\Gamma$ .



Variational Methods & Optimal Control: lecture 19 – p.3/18

# Transversals

Specify the curve  $\Gamma$  parametrically by  $(x_\Gamma(\xi), y_\Gamma(\xi))$ , then the end-points must lie on this line, and so we can write

$$\delta x = \delta \xi \frac{dx_\Gamma}{d\xi}$$

$$\delta y = \delta \xi \frac{dy_\Gamma}{d\xi}$$

and then the condition is

$$p\delta y - H\delta x \Big|_{x_1} = 0$$

$$p \frac{dy_\Gamma}{d\xi} - H \frac{dx_\Gamma}{d\xi} \Big|_{x_1} = 0$$

Variational Methods & Optimal Control: lecture 19 – p.4/18

## Transversal condition

Note that the vector  $(\frac{dx_\Gamma}{d\xi}, \frac{dy_\Gamma}{d\xi})$  is a tangent to the curve  $\Gamma$ .

The **Transversality Condition** is that the vector  $\mathbf{v} = (-H, p)$  is orthogonal to the tangent vector.

i.e.

$$\left(\frac{dx_\Gamma}{d\xi}, \frac{dy_\Gamma}{d\xi}\right) \cdot (-H, p) = p \frac{dy_\Gamma}{d\xi} - H \frac{dx_\Gamma}{d\xi} = 0$$

## Example 1

Shortest path from the origin to a curve  $\mathbf{r}_\Gamma = (x_\Gamma(\xi), y_\Gamma(\xi))$ . The path length is given by

$$F\{y\} = \int_0^{x_1} \sqrt{1+y'^2} dx$$

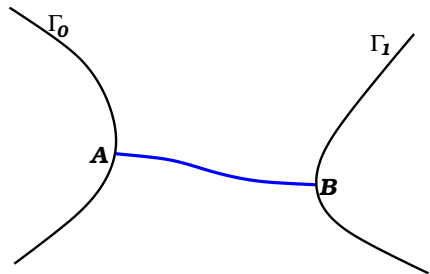
Then

$$p = \frac{\partial f}{\partial y'} = \frac{y'}{\sqrt{1+y'^2}}$$

$$H = y' \frac{\partial f}{\partial y} - f = \frac{y^2}{\sqrt{1+y'^2}} - \sqrt{1+y'^2} = \frac{-1}{\sqrt{1+y'^2}}$$

## Transversals

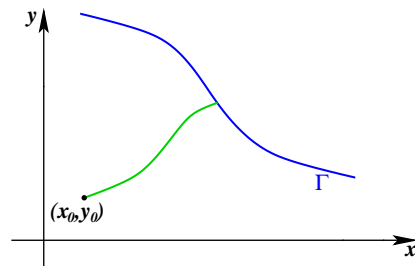
Find the shortest path between two curves



$$p \frac{dy_{\Gamma_0}}{d\xi} - H \frac{dx_{\Gamma_0}}{d\xi} \Big|_{x_0} = 0$$

$$p \frac{dy_{\Gamma_1}}{d\xi} - H \frac{dx_{\Gamma_1}}{d\xi} \Big|_{x_1} = 0$$

Find the shortest path from a point  $(x_0, y_0)$  to a curve  $\Gamma$ .



$$p \frac{dy_\Gamma}{d\xi} - H \frac{dx_\Gamma}{d\xi} \Big|_{x_1} = 0$$

## Example 1

Thus the transversality condition becomes

$$p \frac{dy_\Gamma}{d\xi} - H \frac{dx_\Gamma}{d\xi} \Big|_{x_1} = 0$$

$$\frac{y'}{\sqrt{1+y'^2}} \frac{dy_\Gamma}{d\xi} + \frac{1}{\sqrt{1+y'^2}} \frac{dx_\Gamma}{d\xi} \Big|_{x_1} = 0$$

Now  $\sqrt{1+y'^2} \neq 0$ , so we can multiply through by  $\sqrt{1+y'^2}$  to give

$$\frac{dx_\Gamma}{d\xi} + y' \frac{dy_\Gamma}{d\xi} \Big|_{x_1} = 0$$

Alternatively stated,  $(\frac{dx_\Gamma}{d\xi}, \frac{dy_\Gamma}{d\xi}) \cdot (1, y') = 0$

## Example 1

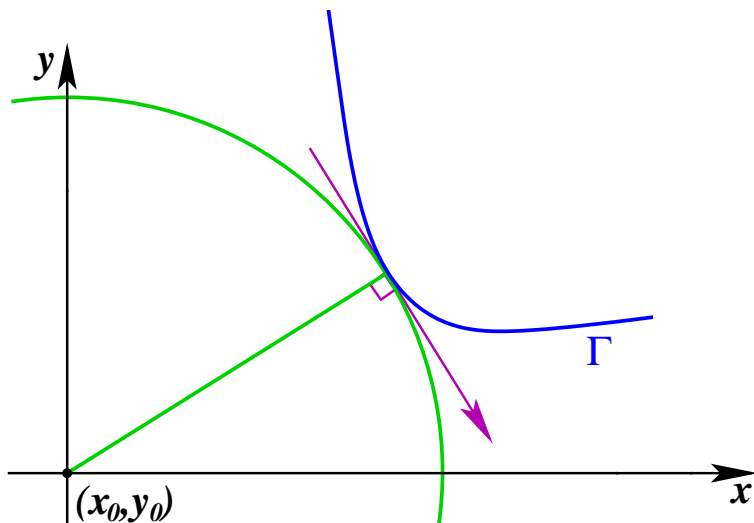
We can interpret  $(\frac{dx}{d\xi}, \frac{dy}{d\xi}) \cdot (1, y') = 0$  geometrically

- ▶ the condition means that the tangent to the extremal must be orthogonal to the tangent to the curve  $\Gamma$  where they connect.
- ▶ E-L equations still imply  $y(x)$  will be straight line
- ▶ this makes perfect sense!
  - ▷ find the distance of curve  $\Gamma$  from the origin.
  - ▷ do this by creating expanding circles, and the one that touched the curve would give us the distance.
  - ▷ it would touch so the circle was tangent
  - ▷ the (straight line) radius would be perpendicular to the tangent.

## Example 1

Sometimes, there will be many possible solutions, for instance if the curve  $\Gamma$  was a circle around the origin!. But now we know how to find them, it would be easy.

## Example 1



## Example 2

Consider the general functional

$$F\{y\} = \int_0^{x_1} K(x, y) \sqrt{1 + y'^2} dx$$

for which we wish to find stationary paths between two curves

$\mathbf{r}_{\Gamma_0} = (x_{\Gamma_0}(\xi), y_{\Gamma_0}(\xi))$ , and  $\mathbf{r}_{\Gamma_1} = (x_{\Gamma_1}(\xi), y_{\Gamma_1}(\xi))$ . The path length is given by Then

$$p = \frac{\partial f}{\partial y'} = \frac{y' K(x, y)}{\sqrt{1 + y'^2}}$$
$$H = y' \frac{\partial f}{\partial y'} - f = \frac{y'^2 K(x, y)}{\sqrt{1 + y'^2}} - K(x, y) \sqrt{1 + y'^2} = \frac{-K(x, y)}{\sqrt{1 + y'^2}}$$

## Example 2

Once again the transversality conditions at each end will revert to the extremal being orthogonal to the tangent to the curves at either end.

However, in this case, the curve joining the two could be distorted by the factor of  $K(x, y)$  so that it is no longer a straight line. Its shape can be determined from the E-L equations.

Variational Methods & Optimal Control: lecture 19 – p.13/18

## Example 3

This problem is a special case of Example 2, and so

- ▶ from transversality constraints that the chain will join the two curves at a right angle.
- ▶ E-L equations imply the curve will be a catenary (see earlier lectures for the derivation of the catenary)

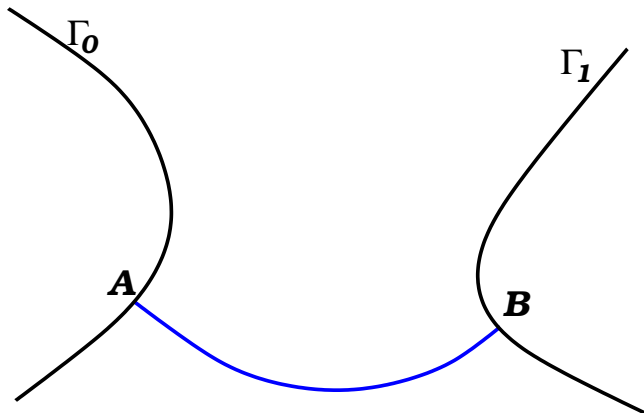
$$y(x) + \lambda = c_1 \cosh\left(\frac{x - c_2}{c_1}\right)$$

- ▶ we need simply to use the perpendicularity (and fixed length) constraints to derive the values of the constant of integration, and the Lagrange multiplier.

Variational Methods & Optimal Control: lecture 19 – p.15/18

## Example 3

Find the shape of a fixed length chain hanging between two curves (similar to catenary problem, but end-points can move freely along two curves).



Variational Methods & Optimal Control: lecture 19 – p.14/18

## Example 4

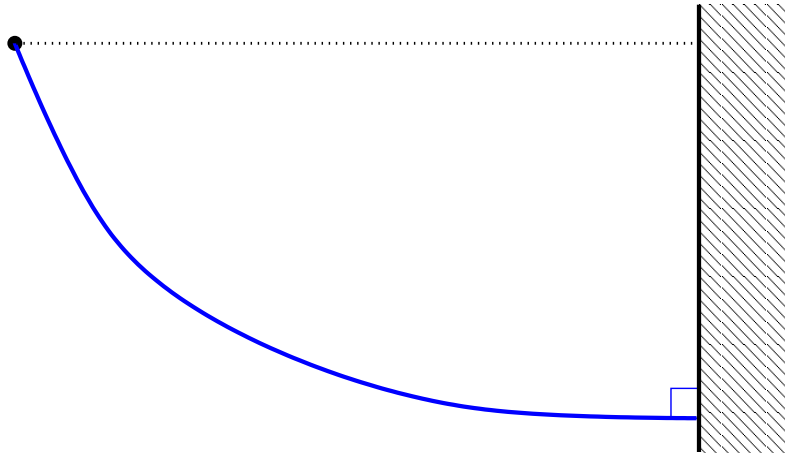
A variant of the Brachystochrone: find the curve of fastest descent from a point to line.

$$T\{y\} = \int_{x_0}^{x_1} \frac{\sqrt{1+y'^2}}{\sqrt{\frac{2E}{m} - 2gy(x)}} dx = \int_{x_0}^{x_1} K(y) \sqrt{1+y'^2} dx$$

- ▶ E-L equations show that the curve must be a cycloid
- ▶ Transversality constraints (see Example 2) show that, at the point of contact, the extremal will be perpendicular to the line.

Variational Methods & Optimal Control: lecture 19 – p.16/18

## Example 4



Variational Methods & Optimal Control: lecture 19 – p.17/18

## Example 5

Shortest path from a point to a surface.

- ▶ E-L equations show that the curve must be a straight line
- ▶ Transversality constraints show that, at the point of contact, the extremal will be normal to the surface.  
(see CE 5 solutions for an example that shows this).

Variational Methods & Optimal Control: lecture 19 – p.18/18